

## Pilot Solenoid Valve Plastic

### Construction

The directly controlled GEMÜ 3/2 way solenoid valve consists of a solenoid encapsulated in plastic and a plastic valve body. A socket provides a connection to electrical supply. A manual override is integrated as standard.

**GEMÜ 320:** This variant is designed for single mounting. The valve body has a straight through design. The pneumatic connection is via a female thread.

**GEMÜ 322:** This variant is designed for battery mounting of up to 12 units (by using clips) depending on the devices to be controlled.

**GEMÜ 324:** For direct mounting to pneumatically operated valves or other devices (inlet and outlet arranged at an angle of 90°).

**GEMÜ 326:** Compact valve battery with aluminium distribution rail for mounting in switch gear cubicles or as valve manifold near the pneumatic components to be controlled

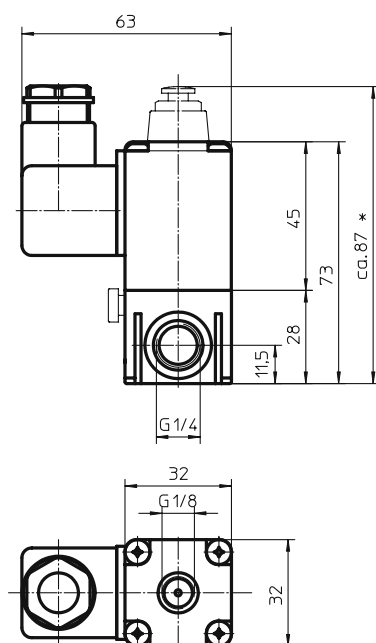
### Features

- Suitable for the control of chemically inert gas
- Control functions “normally closed” and “normally open” are available

### Advantages

- Robust design
- Reliable direct control of the control medium
- Multi-functional application possibilities due to various designs
- Accessories (only for GEMÜ 326)
  - Battery rails and blanking plates

### Dimensions - GEMÜ 320 (mm)



\* only control function 2

Dimensions for GEMÜ 322, 324 and 326 see pages 3 and 4.



GEMÜ 320



GEMÜ 322



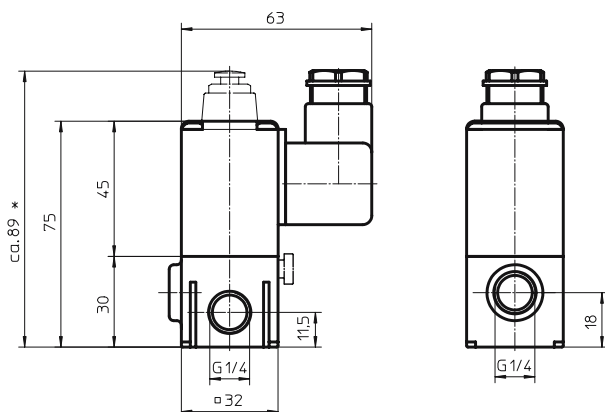
GEMÜ 324



GEMÜ 326

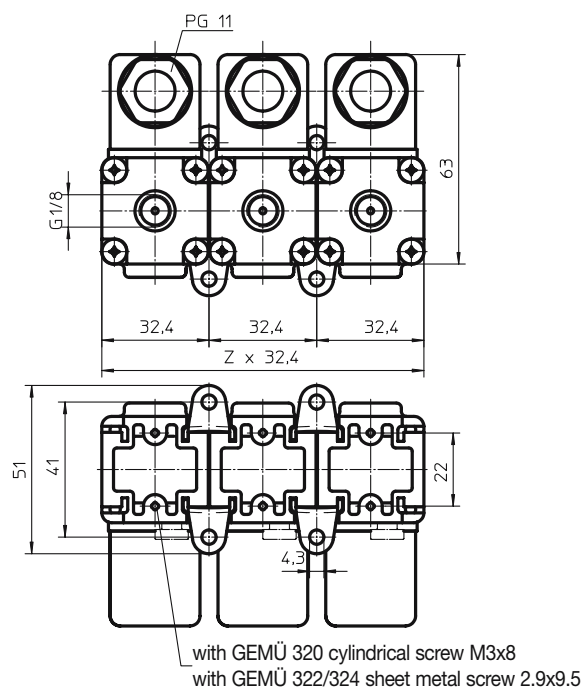
Technical data				Order data							
Rating				Nominal size							
Continuously rated				2 mm							
Max. switching frequency				Body configuration				Code			
3600 times/hour				Multi-port body				M			
Switching time				Connection				Code			
20 ms				Threaded sockets				1			
Power consumption				Valve body material				Code			
Pull in current		18 VA		PBTP (GEMÜ 320, 322, 324)				25			
Hold in current		8 VA or 6.5 W		PPS (GEMÜ 326)				72			
Permissible voltage tolerances				Seal material				Code			
-10/+6%				FPM				4			
Protection class				Control function				Code			
IP 65				Normally closed				1			
Normally open *								2			
				* only GEMÜ 320, 322, 324							
Electrical connection				Supply voltages / frequency							
Standard plug DIN 43650 form A with PG 11 gland (Plug can be rotated through 90°)				AC voltage			Code				
				24, 42, 48, 110 V	50 Hz		* / 50				
				24, 110, 120 V	60 Hz		* / 60				
				230 V	50/60 Hz		* / 50/60				
				DC voltage							
				12, 24, 48, 110 V			* / DC				
				Other voltages upon request							
				* Indicate the required voltage here							
Working medium				K- Number (only GEMÜ 324)				Code			
Chemically inert gas				Hollow bolt, male thread G 1/4				Standard			
Temperature range of working medium -15...+50° C				Hollow bolt, male thread G 1/8				5200			
Working pressure 0 - 10 bar											
Ambient conditions				General note:							
Ambient temperature -20...+50°C				Only screwed plugs form A or B in short design acc. to DIN 3852 can be used.							
K <sub>v</sub> value											
Normally closed		1.2 l/min									
Normally open		1.2 l/min									
Weight											
220 g											
Installation note											
If installed in switch gear cubicles adequate ventilation must be provided.											
Order example		326	2	M	1	72	4	1	230	50/60	-
Type		326									
Nominal size		2									
Body configuration (code)				M							
Connection (code)					1						
Valve body material (code)						72					
Seal material (code)							4				
Control function (code)								1			
Supply voltage (code)									230		
Frequency (code)										50/60	
K-Number (only GEMÜ 324) (code)											-

## Dimensions - GEMÜ 322 (mm)

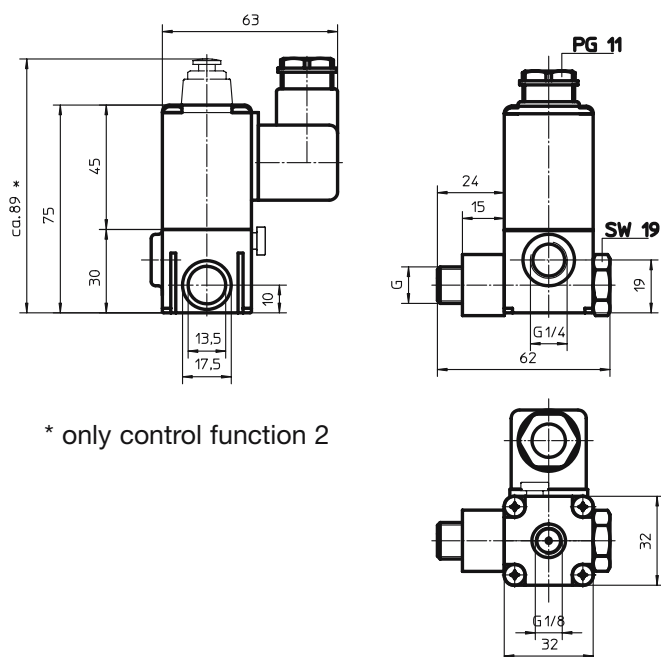


\* only control function 2

## Dimensions of battery (GEMÜ 322) (mm)



## Dimensions - GEMÜ 324 (mm)

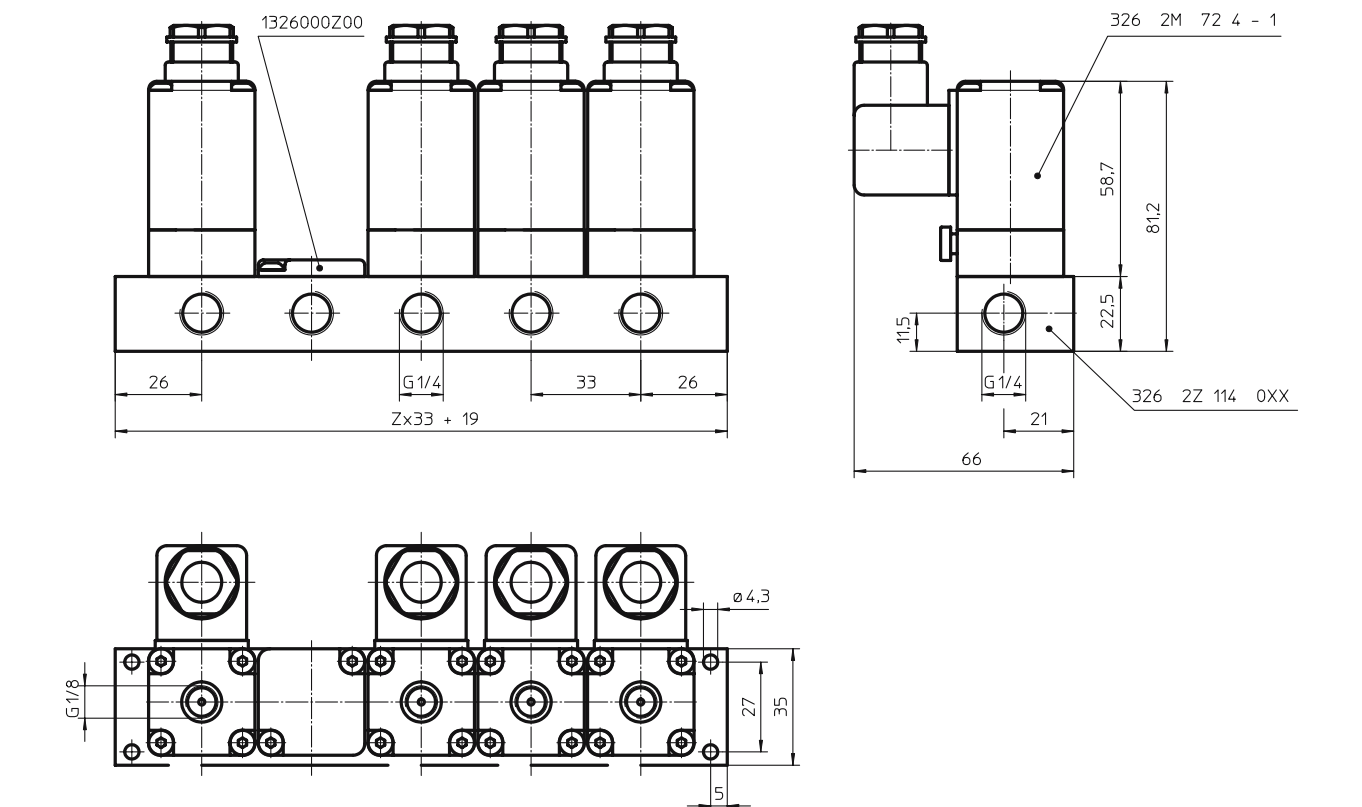


\* only control function 2

## Dimensions - GEMÜ 324 (mm)

Type of design	G
Standard	G 1/4
5200	G 1/8

### Dimensions - GEMÜ 326 (mm)



## Battery rails

### Blanking plate

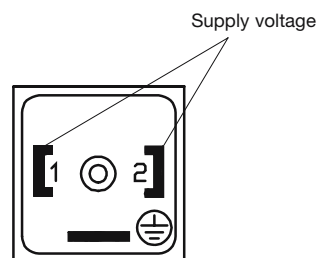
Connection	Code
Threaded sockets 1/4	1

Order no.
326000ZBL

Body material	Code
Aluminium	14

DN (mm)	Battery rail	Order no.
2	2-fold	326 2Z 114 002
2	3-fold	326 2Z 114 003
2	4-fold	326 2Z 114 004
2	5-fold	326 2Z 114 005
2	6-fold	326 2Z 114 006
2	7-fold	326 2Z 114 007
2	8-fold	326 2Z 114 008
2	9-fold	326 2Z 114 009
2	10-fold	326 2Z 114 010

### Connection diagram



For further solenoid valves, accessories and other products please see our Product Range catalogue and Price List. Contact GEMÜ.



**GEMÜ® VALVES, MEASUREMENT  
AND CONTROL SYSTEMS**